

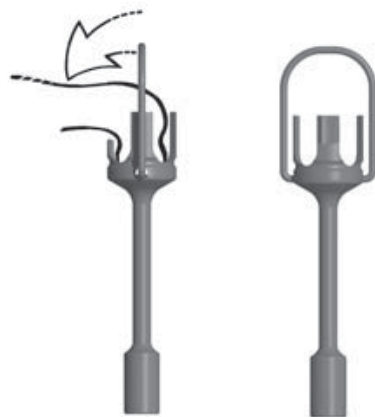
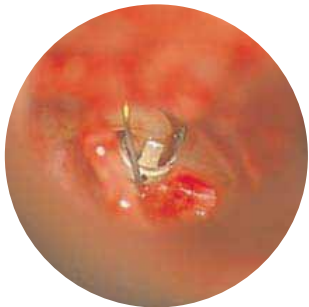
BARTELS BUCKET HANDLE

UNIQUE....

- **Malleable slotted bucket** accommodates small and large sized incus.
- Flexible design allows **easier angling** of prosthesis if needed
- When desirable, the well can be **widened** before placement or **crimped** in situ to fit.
- **Reduced 0.3mm diameter** shaft for better clearance between over-hanging facial nerve and promontory.
- **Reduced OR inventory:** small, medium, and large well all in one.



Off-set



0.4mm

Type	Shaft Dia.	REF. #	Length	*Off-Set REF. #		
Adjustable Well	0.6mm	426-350	3.50mm			
		426-375	3.75mm			
		426-400	4.00mm	428-400		
		426-425	4.25mm			
		426-450	4.50mm	428-450		
		426-475	4.75mm			
		426-500	5.00mm	428-500		
		Adjustable Well	0.4mm	427-350	3.50mm	
				427-375	3.75mm	
				427-400	4.00mm	
427-425	4.25mm					
427-450	4.50mm					
427-475	4.75mm					
427-500	5.00mm					

*Designed in conjunction with Loren Bartels, MD, Tampa, FL



GRACE MEDICAL

an enteroptyx company

8500 Wolf Lake Dr., Suite 111 • Memphis, TN 38133 USA • 1.866.472.2363 • 901.386.0990 • Fax 901.386.0950

www.gracemedical.com • info@gracemedical.com